

## Wiring kit to start an asynchronous motor



Wiring kit for industrial electrical equipment in housings to start-up a 300W asynchronous motor. Various diagrams are proposed: Direct, Star/Triangle, reversal of the direction of rotation... Each component unit has 4mm dual chamber safety terminals for the various connections.

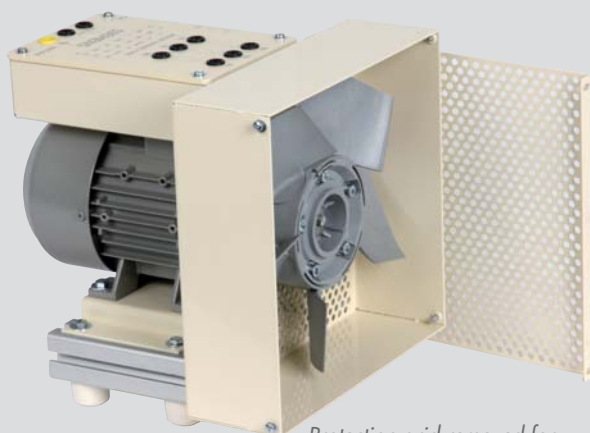
The Kit is supplied with diagrams and instructions for the components. Option to complete this kit at a later date with for example, a speed controller, a starter/decelerator, etc. Your kit can be customised upon request. Please contact us.

### The kit comprises

- 1 three phase power supply unit with circuit breaker, emergency stop and On/Off
- 4 power contactor units
- 2 single-pole + neutral circuit breaker units
- 1 25A – 30mA differential four-pole switch unit
- 1 4A D curve four-pole thermal magnetic circuit breaker unit
- 2 auxiliary contactor units for a 2F+2O control circuit
- 1 auxiliary contactor unit for a 4F+3O-time O+F work control circuit
- 1 emergency stop switch/disconnector unit with 4 25A contacts
- 1 0.4 to 0.63A + 1O three-pole thermal relay unit
- 1 230V/24V single phase 120VA safety transformer unit
- 1 24V green LED indicator light unit
- 1 24V red LED indicator light unit
- 1 24V white LED indicator light unit
- 2 black push-button units with 'F+O' contact
- 1 red push-button unit with 'O' contact
- 1 emergency stop unit with 'O' contact, key override
- 1 double push-button unit with 'F+O' contact and 24V indicator light
- 1 set of safety leads in several colours and lengths to wire all components.

ref. KT-1

### FAN OPTION



*Protection grid removed for photo purposes only*

ref. KT-1M

The KT-1 kit can be completed by a fan.

- 300W 400/690V three-phase fan.
- Rated speed 1500 rpm
- Power supply through 4mm dual chamber safety terminals